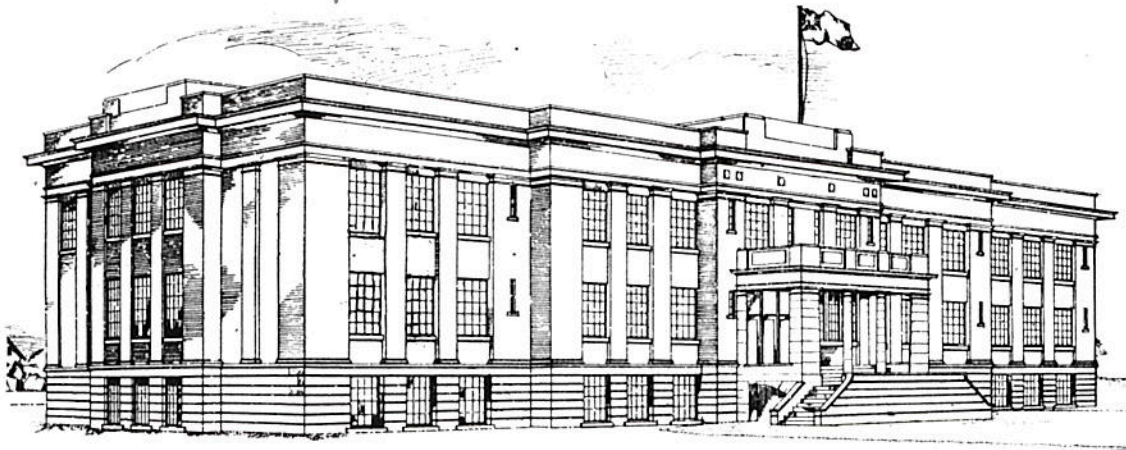


Vol. 26, Oct 23, page 65.



The Connaught School, Regina. Architect, Mr. J. H. Puntin; contractors, Parsons Building Company, Limited

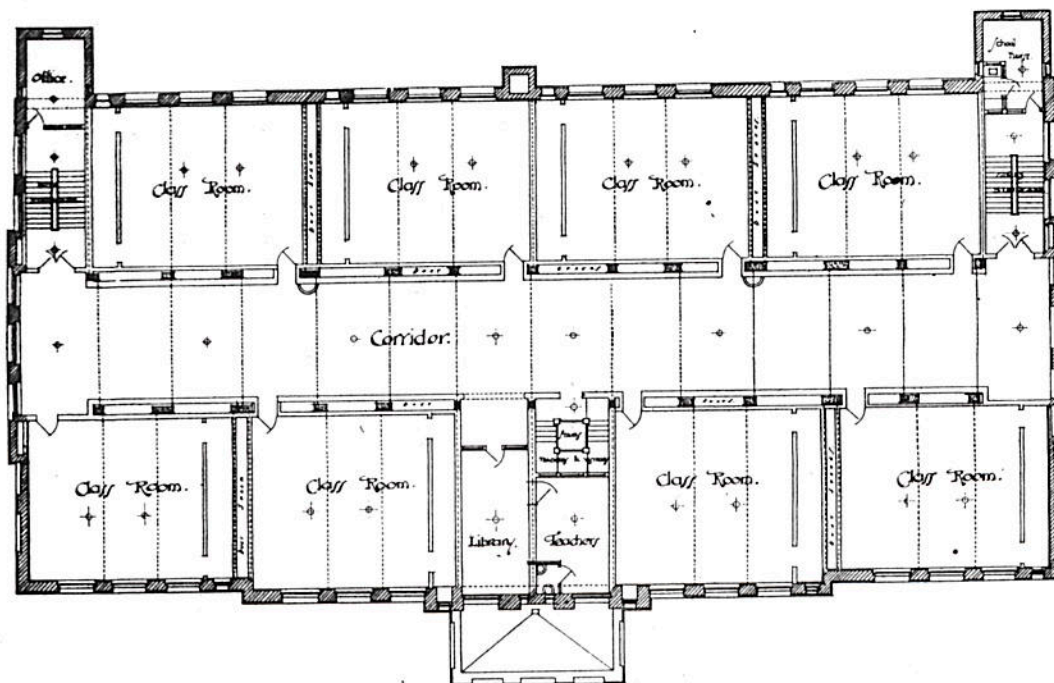
room on the next floor, being finished in Italian walnut, while other offices throughout the building will be finished in white oak. Behind the counter the floor will be of cork tile. On the same level there are to be rooms for the working staff.

The Royal Trust will also occupy the first floor, which will contain the auditor's room, a large lunch room, and securities department. The other floors are to be let for offices for various firms, there being accommodation for storage on the fourth floor and vaults on the sixth and seventh floors. On the roof there is to be a tank for storing water.

The Calgary Clay, Coal and Coke Company, Limited, has been incorporated with a capital of \$2,800,000 to deal in bricks, clay and other building materials. The head office will be at Calgary.

The Connaught School, Regina

THE accompanying illustrations show a perspective view and floor plan of the new Connaught School, Regina, now under construction and for which plans were prepared by Mr. J. H. Puntin, architect, of Regina. The building is situated on the corner of the 13th avenue and Elphinstone street. At the time of writing, our information is that the corner-stone of the building is to be laid by H.R.H. the Duke of Connaught, upon the occasion of his approaching visit to the city. The building embodies the most approved principles of school design. The columns and floor slabs are reinforced and the exterior is of Bedford stone and Menominee red brick. The building is equipped with an elaborate ventilating system and all modern improvements. The contractors are the Parsons Building Company, Limited, Regina, Sask.



Floor Plan, Connaught School, Regina



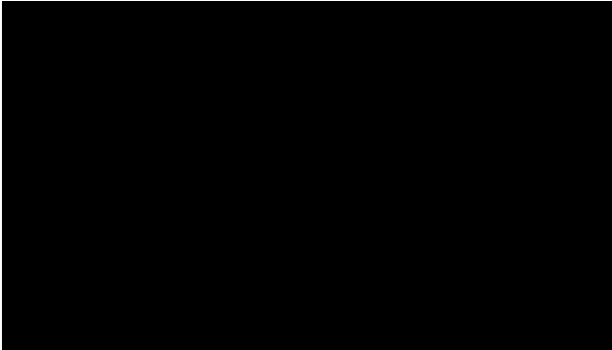
PAT-10040393

SRU

SRU

CONTRACT RECORD AND ENGINEERING REVIEW

APR 16 2012



SUBMITTED: 2012-03-15 13:05:09
PRINTED: 2012-03-16 08:58:34
REQUEST NO.: PAT-10040393
SENT VIA: World Wide Web
PATRON TYPE: Faculty

PAT Regular Copy Journal NEED BEFORE: 2012-05-30

TITLE: CONTRACT RECORD AND ENGINEERING REVIEW
PUBLISHER: ;
VOLUME/ISSUE/PAGES: 26(Oct 23) 65
DATE: 1912
AUTHOR OF ARTICLE: Puntin JH
TITLE OF ARTICLE: [ARTICLE ABOUT CONNAUGHT PUBLIC SCHOOL]
SOURCE: blank New from SRU (G-SRU120300191-SFU3)

NOTES: PATRON NOTE: sjrk
SITES: MWU OON

DELIVERY: Pickup: Borrowing Desk - Dr. John Archer Library
REPLY: E-mail: patricia.elliott@uregina.ca